

DAYTON DATA—1923

DAYTON DATA 1923

Founded	1796
Incorporated	1805
Area (square miles)	16.75
Altitude (feet above sea level)	800
Population (Est., inc. suburbs)	200,341
Assessed valuation of city (1922)	\$231,373,170.00
Tax rate (per \$1,000, inc. \$3.473 high-water prevention)	\$28.20
Building permits (number, 3,346—1922)	\$11,511,491.00
Post Office receipts (1922)	\$1,330,532.85

GROWTH (U. S. Census)

1850	10,977
1860	20,821
1870	30,473
1880	38,678
1890	61,220
1900	85,333
1910	116,577
1920	152,559
1920 foreign born	13,111
1920 Negroes	9,025

INDUSTRY (Estimated)

Factories	650
Value of products	\$237,343,000.00
Cost of materials	\$105,764,107.00
Persons engaged	40,740
Pay roll	\$65,343,626.00
Industrial construction	\$5,563,277.00

(1919 U. S. Census)

Factories	571
Capitalization	\$121,658,316.00
Value of products	\$174,990,607.00
Cost of materials	\$78,460,468.00
Persons engaged	36,495
Pay roll	\$49,981,226.00

TRADE (Estimated)

Retail establishments (40 mi. radius)	2,300
Persons residing within retail area	649,600
Value of retail business	\$35,000,000.00
Wholesale establishments (200 mi. radius)	65
Persons residing within wholesale area	13,000,000
Value of wholesale business	\$45,000,000.00

FINANCE—(1922)

Banks	15
Deposits	\$49,477,000.00
Clearings	\$234,823,450.80
Building and loan associations	18
Resources	\$70,600,000.00
Mortgage loans	\$65,650,000.00

TRANSPORTATION—(1922)

Steam railways	6
Passengers	739,126
Freight, tons	2,558,839
Electric interurban railways	6
Passengers	3,997,117
Freight, tons	179,434
Street railways	11
Passengers	48,057,390
National highways	3
Automobiles, pleasure (increasing 25% per year)	27,000
Automobiles, trucks	7,000
Air Fields	5

LIVING CONDITIONS—(1922)

Homes	35,162
Homes owned (estimated)	20,000
Home building	\$4,948,214.00
Hotels	38
Hospitals	4
Birth rate (per 1,000)	20.
Death rate (per 1,000)	10.9
Temperature (average)	54.4°

PUBLIC SERVICE

Electric power and light users	47,000
Res. lighting rate (per kw. h. net)	\$.085
Commercial lighting rate (per kw. h. average net)	\$.057
Industrial power rate (per kw. h. average net)	\$.0199
Capacity (h. p.)	110,000
Gas users	39,000
Rate (minimum per 1,000 cu. ft.)	\$.50
Water users	34,000
Rate (minimum per 1,000 cu. ft.)	\$1.65
Consumption (gallons per 24 hours)	22,000,000
Capacity (gallons per 24 hours)	60,000,000
Telephones	27,000
Policemen	195
Firemen	210

EDUCATION

Public Schools	32
Students	30,401
Teachers	770
Parochial schools	19
Students	6,011
Teachers	236
Business colleges	2
University	1
Seminaries	2
Libraries (135,000 volumes)	3
Art Museum	1
Newspapers	4
Churches	138

RECREATION

Parks and playgrounds	22
Area (acres)	1,125
Country clubs	4
Luncheon clubs	12
Golf courses	7
Theatres (including 4 legitimate)	31
Tourist camps	4

THE CITY OF A THOUSAND FACTORIES

DAYTON

Leads the World in the Manufacture of

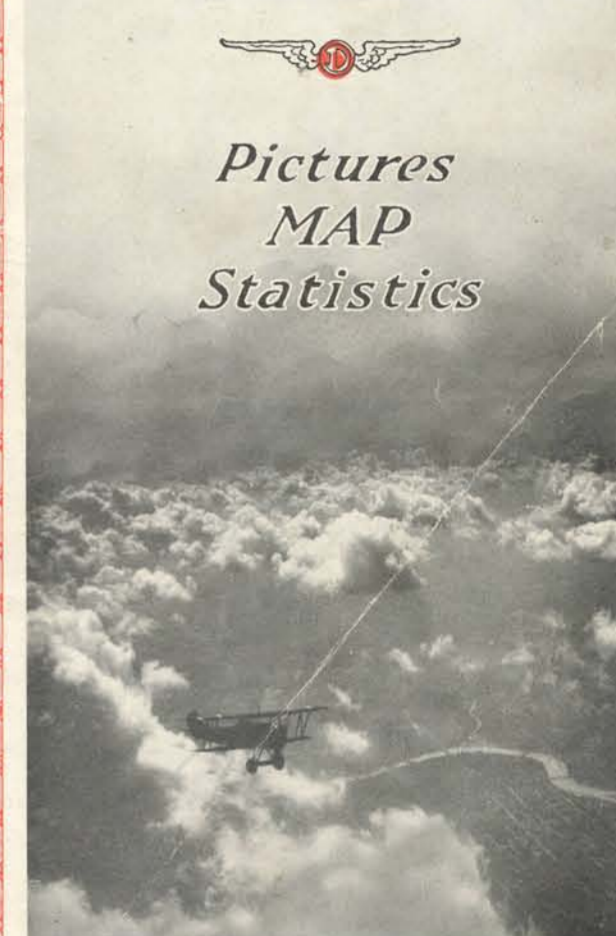
Airless Automobile Tires	Golf Shafts
Autographic Registers	Gasoline Gauges—Instrument Board Type
Automobile Lighting, Starting and Ignition Systems	Hill Climber Toys
Baby Wagons	Hoisting Jacks
Bicycles	Kites
Cash Registers	Machinery for Paper Mills, Printers and Allied Trades
Chairs	Metal Display Signs
Chemical Apparatus made from an Iron Silicide	Ornamental Bar Radiator Caps
Clay Working Machinery	Paper Trimming Knives
Computing Scales	Portable Talking Machines
Cutting Machines	Railway Car and Ship Hardware
Darning Fluid	Sealing Wax for Fruit Jars
Dayton Crackers	Self Adjusting Car Wrenches
Die Presses	Shoe Lasts
Dowel Machines	Special Display Devices
Electric Lighting Plants for Homes	Steam Fittings
Electric Portable Clamp Lamps	Steel Tennis Racquets
Electric Toy Automobiles	Steel Wheels for Motor Trucks
Electric Wheel Chairs	Stokers
Electrolytic Bleaching Machines	Talking Machine Motors
Fare Recording and Indicating Registers	Tool Chests
Filing Envelopes for Court Papers	United States Stamped Envelopes
Fine-Cut Tobacco-Cutting Machinery	United States Stamped Envelope Paper
Fire Extinguishers	Washing Machines
Fruit Tree Labels	Welded Tanks for Gasoline Underground and Oil Burner Installations
Gear Chucks	Water Systems for Residences
Glue Waterproofing Chemicals	
Golf Clubs	

The Dayton Chamber of Commerce
DAYTON, OHIO

MAIN & BRANCH REFERENCE DEPT.

DAYTON

The Birthplace of the
Airplane
And the Nation's Center
of Aviation



*Pictures
MAP
Statistics*



McCook Field

CITY BEAUTIFUL

The immaculate appearance of the business and residential districts interspersed with garden spots and defined by four beautiful rivers, wide streets and boulevards lined with trees, gives to Dayton a distinct personality. Its industries are among the pioneers in the ornamentation of factory buildings and grounds and in the promotion of city beautification generally.

The numerous recreational retreats where the joys of nature and sports abound include the largest municipally owned country club in the world. It contains nearly three hundred acres of virgin woods, golf links, etc., and is the favorite playground of the citizens of Dayton.

One of the most delightful automobile tourist camps in the country occupies a part of the more than one thousand acres of park area controlled by the city. Situated near the heart of the city, still surrounded by all the attractions of nature, this camp is a mecca for automobile tourists.



Miami River and Main Street Bridge

DAYTON FIRST IN THE AIR

Five fields are located in and near Dayton, including McCook and Wilbur Wright U. S. Government Fields.

McCook field is the home of the Engineering Division of the Air Service. Its experimental laboratories are credited with many of the foremost developments in aircraft. Through the testing and development work done here, many of the world's air records, now held by the United States, were made possible. The DeBothezat helicopter, the first to make a successful flight, and the Barling Bomber, the world's largest airplane, are numbered among the notable accomplishments of this field.

At Wilbur Wright Field, the site of the early experiments of the Wright Brothers, the United

States Government maintains an aviation supply depot and airplane manufacturing plant. The landing area of this field is considered by aviation authorities to be the most perfect in the United States. Many world's air records have been made from this point, including the endurance record of the famous T-2.

To provide an ideal permanent home for the Engineering Division of the Air Service, now located at McCook Field, the area of Wilbur Wright Field has been expanded to five thousand acres. This gift from the people of Dayton to the United States Government has been definitely accepted by the War Department for the future site of the Nation's Air Center. It is the largest aviation field in the world.



GOVERNMENT

The Dayton Plan of City Management has become the criterion of municipal efficiency. Sound and impartial judgment, to which the industrial success of the city is attributed, leads to the adoption of similar principles in the management of the city.

Like an immense industry, the people are the stockholders, they elect five directors and the directors employ an efficient and experienced general manager to run the city.

The directors are called commissioners—the one who receives the largest number of votes is known as the mayor. The General Manager has the title of City Manager.

Dayton was the first large city to adopt this form of government. Since its adoption here in 1914, several hundred towns and cities throughout the United States have copied, in whole or in part, the Dayton plan.



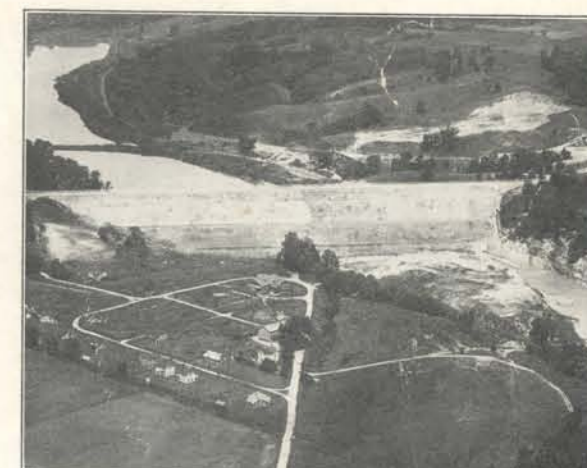
Wilbur Wright Field

SAFETY CITY FROM HIGH WATER

The America that Columbus discovered was adorned with vast areas of virgin woods that absorbed excessive rainfall and regulated the flow of streams. With the encroachment upon these wooded lands demanded by progress, many modern communities have become subject to a destructive overflow of the most modest little rivulets.

The possibilities of such a menace, however, have been completely eliminated at Dayton through the construction of one of the world's largest high water prevention projects. Five mammoth basins or dry reservoirs, designed to hold back any surplus volume of water, are located on the principal rivers in the vicinity of Dayton.

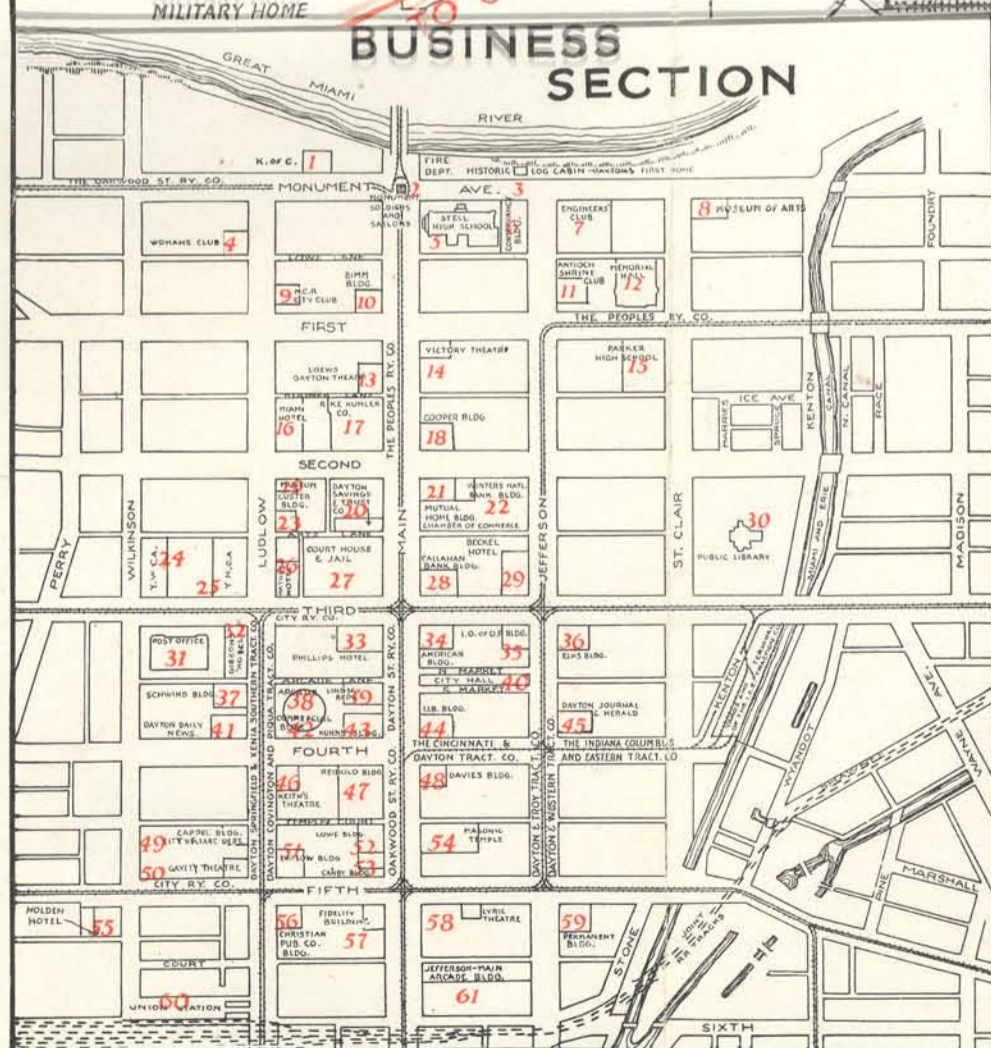
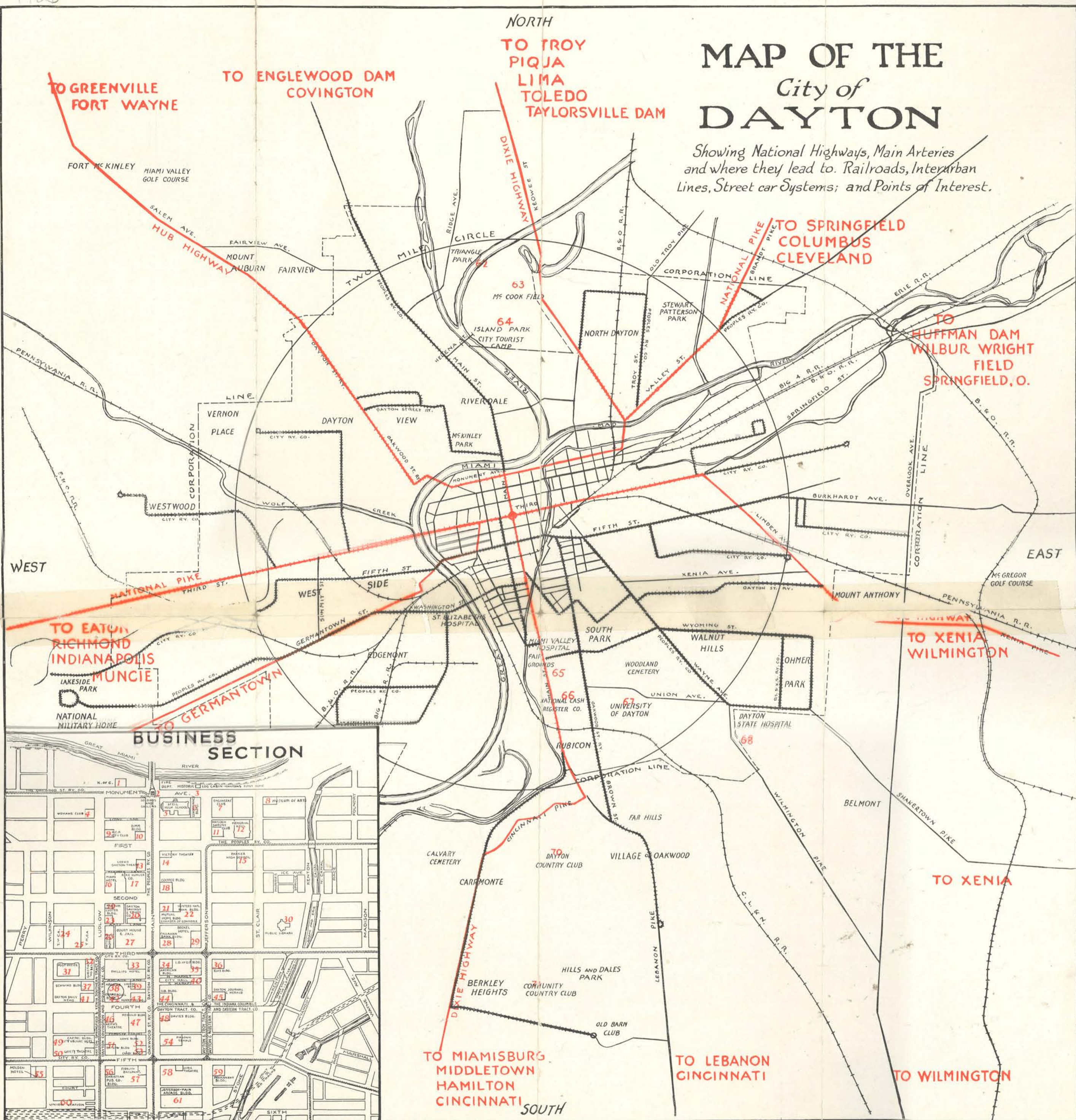
The building of these huge basins which provide complete protection against the overflow of streams, required about ten years, cost thirty-five million dollars and represents one of the greatest engineering feats ever attempted in the United States.



Mammoth Basin at Germantown near Dayton

MAP OF THE City of DAYTON

Showing National Highways, Main Arteries and where they lead to. Railroads, Interurban Lines, Street car Systems; and Points of Interest.



INDEX

- | | | | | | |
|--------------------------------------|------------------------------------|---------------------------------|-------------------------------------|---------------------------|--------------------------------|
| 34—American Building | 42—Commercial Building | 56—Elks Building | 61—Jefferson-Main Arcade | 54—Masonic Temple | 15—Parker High School |
| 11—Antioch Shrine Club | 71—Community Country Club | 7—Engineers' Club | 46—Keith's Theatre | 63—McCook Field | 59—Permanent Building |
| 38—Arcade | 6—Conservancy Bldg. | 65—Fair Grounds | 1—Knights of Columbus | 12—Memorial Hall | 62—Triangle Park |
| 29—Beckel Hotel | 18—Cooper Bldg. | 57—Fidelity Building | 43—Kulms Building | 33—Phillips Hotel | 44—Union Brethren Building |
| 10—Bimm Building | 70—Country Club | 50—Gaiety Theatre | 39—Lindsay Building | 31—Post Office | 40—Union Station |
| 28—Callahan Bank Building | 32—Gibbons Hotel | 32—Gibbons Hotel | 30—Log Cabin (Dayton's First House) | 30—Public Library | 67—University of Dayton |
| 53—Canby Building | 26—Haynes Hotel | 26—Haynes Hotel | 13—Loew's Dayton Theatre | 19—Public Museum | 14—Victory Theatre |
| 49—Cappel Bldg. (City Welfare Dept.) | 48—Davies Building | 55—Holden Hotel | 52—Lowe Building | 21—Museum of Arts | 22—Winter's Nat. Bank Building |
| 40—City Hall | 41—Dayton Daily News | 35—I. O. O. F. Building | 51—Ludlow Building | 17—Rike-Kunler Co. | 4—Women's Club |
| 21—Chamber of Com. (Mut. H. Bldg.) | 45—Dayton Journal and Herald | 64—Island Park (Tourists' Camp) | 58—Lyric Theatre (The Playhouse) | 9—N. C. R. City Club | 25—Y. M. C. A. |
| 56—Christian Pub. Co. Building | 20—Dayton Savings & Trust Building | | | 69—National Military Home | 24—Y. W. C. A. |